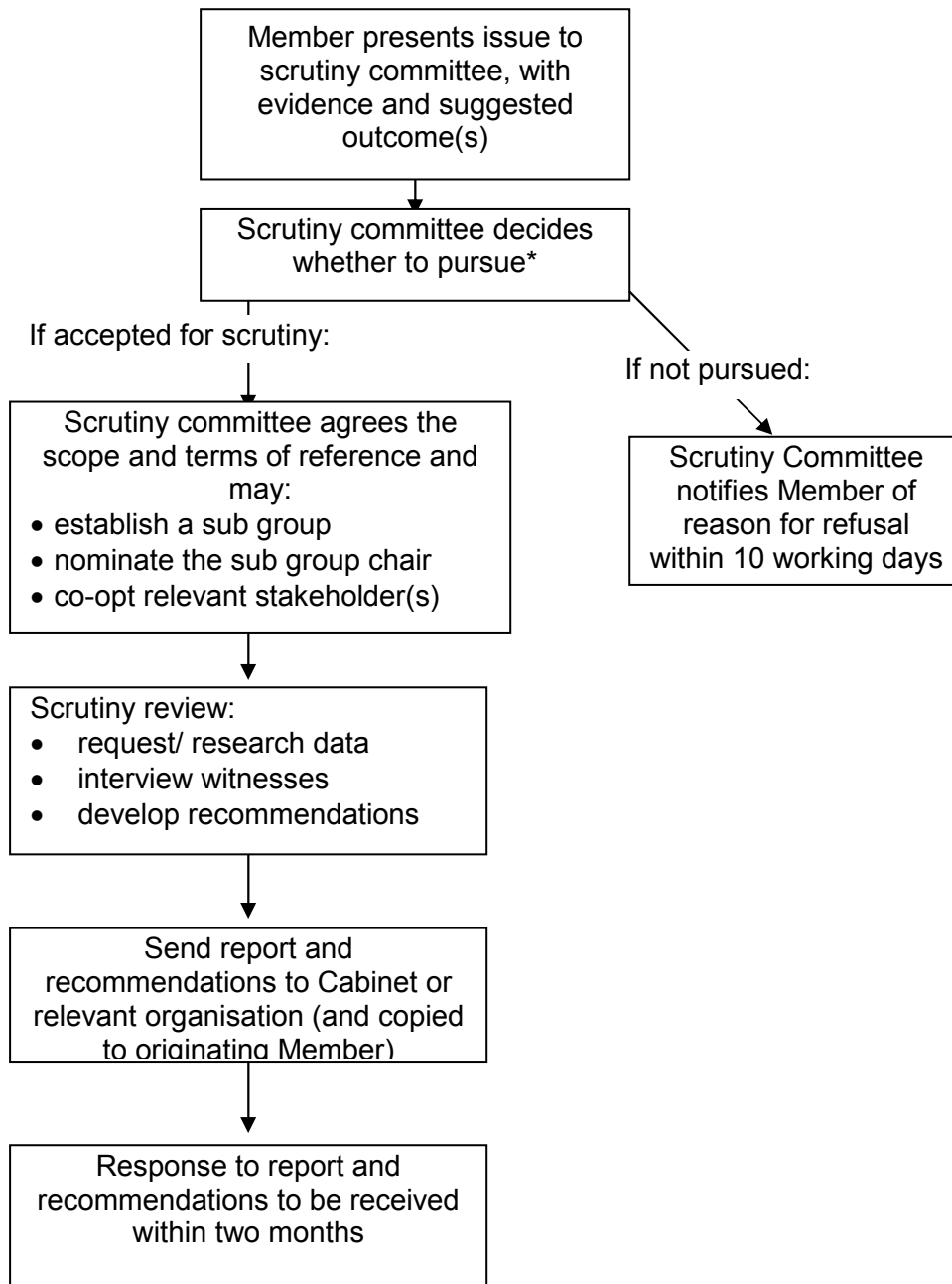


Scrutiny element of CCfA process



* The Committee will refer to its agreed *Guidance on whether to accept CCfA* and existing criteria for selecting scrutiny topics.

Note: It is the responsibility of the originating ward Member to:

- keep the relevant resident(s) informed throughout
- champion the issue at each stage, collating and presenting evidence, and constructive suggestions for a resolution